



Toyota Model School- Govt Higher Primary School – Hejjala

➤ Project Objective

To develop **community managed** MODEL school **equivalent with private** school to provide **advanced education** to marginalized children of the community

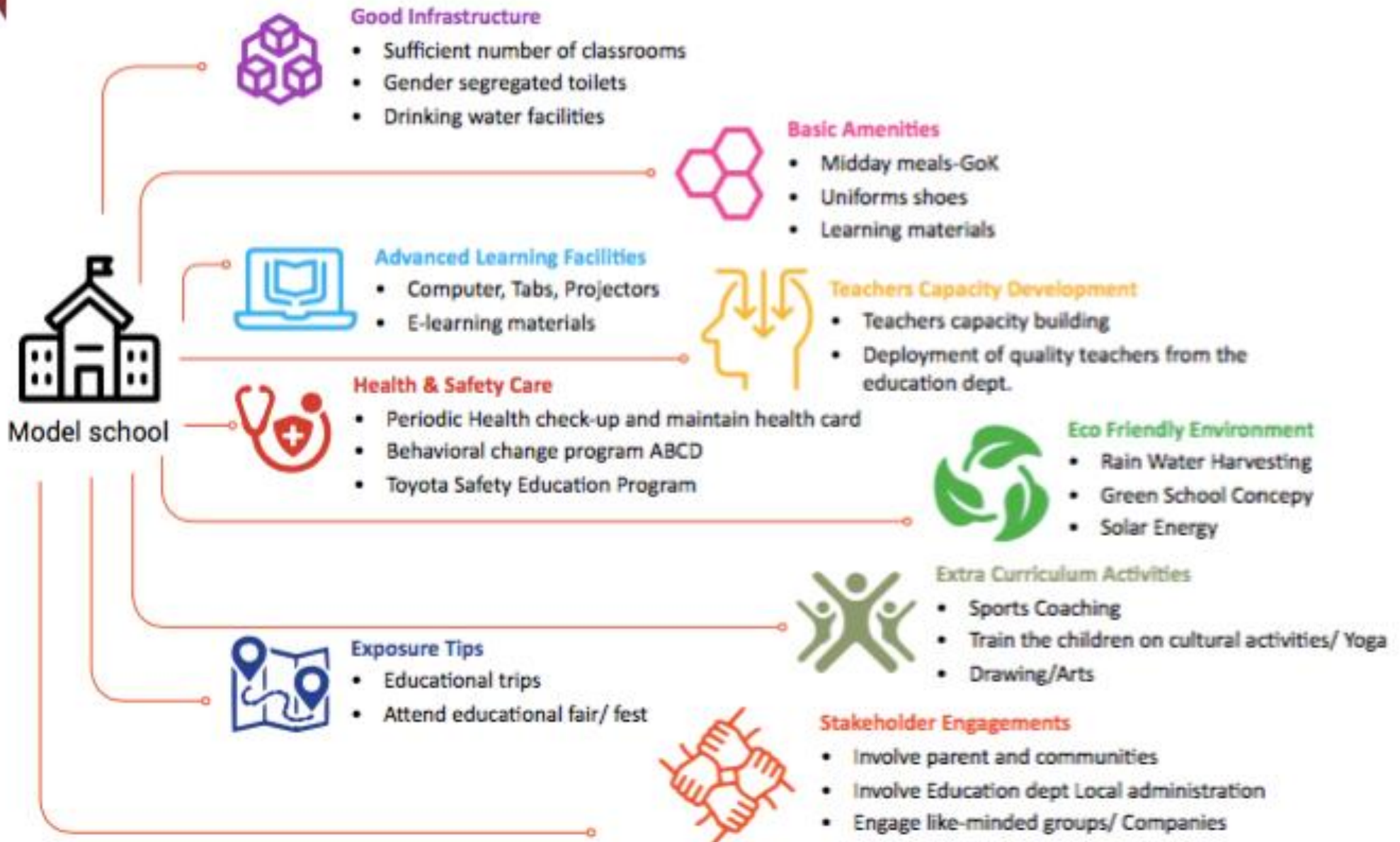
➤ Vision

To **redefine the perception of Government school** through advanced and tangible interventions, quality education, focus on boosting enrolment, and holistic development.

➤ Mission

To provide a **competent learning platform** for children belonging to weaker sections by incorporating new-age teaching and learning methodologies, revamping infrastructures, providing basic facilities and making the model school concept a **self- sustainable approach**.

Objectives of Model School





**GOVERNMENT
LOWER PRIMARY
SCHOOL, HEJJALA
(1943-2016)**





**GOVERNMENT LOWER
PRIMARY SCHOOL,
HEJJALA
2016-2017**



**GOVERNMENT HIGHER
PRIMARY SCHOOL, HEJJALA
2018**

**School upgraded from
Lower Primary to
Higher Primary in 2018**



Model school Infra Cost : Rs. 9.5 Mil
Model school Sparsha cost : Rs. 6.3 Mil
Total cost : Rs. 15.6 Mil

Model school Handed over to Education dept on 29th Mar 2021



Our Journey

Timeline of Activities

Dec 2017 to March 2018

- Baseline survey in the village
- Identified Gaps
- Appointed 3 full time teachers from Sparsha
- Developed digital curriculum

Focus on Quality Education & Sustenance

April 2018 to March 2020

- Enrollment drive
- Digital curriculum
- Teaching support
- Computer class & Library
- Special Class
- Extra curriculum activities- Music class ,Art & Craft, Yoga etc
- Stakeholder Engagements

April 2020 to March 2021

- Digital Curriculum updation
- Teacher's Capacity building
- Trust Registration & compliance
- Stakeholder Engagement
- Handholding

Initiatives

- Introduced summer camp
- Conducted enrolment Drive
- Developed science lab

Initiatives & Interventions

- House Visits
- Green Campus
- Plastic Drive
- Festival celebrations
- Community engagement activities
- Street Adoption
- Interschool competitions
- Science fair
- Trust Formation

Handover Phase

- Availing Pan Card
- Applying 12A & 80G
- Training Trust members
- Developing SOP document
- Hand holding
- Hand over



2021-22- Handholding support for Sustenance



Admission

- Admission is the first step towards opening the gates of school for children. To ensure maximum enrolment three core activities are conducted - enrolment drives, summer camps and adherence to proper admission process.





Academics

- Evolving education scenario makes digital teaching and learning a must in every school while also emphasizing on experiential learning and maintaining individual record of progress for each child. Hence, we have included four core activities surrounding academics – digital curriculum, science experiments, library and children assessments.





Extra-Curricular Activities

- Alongside academics, it is important to provide children a platform for skill development. Academics and extra- curricular activities together result in overall development of children. With this understanding a couple of extra-curricular activities were introduced to children to teach ambidexterity, support intellectual development, hone talents and organising skills; inculcate the value of saving and to make them environment-friendly.





Community Engagement

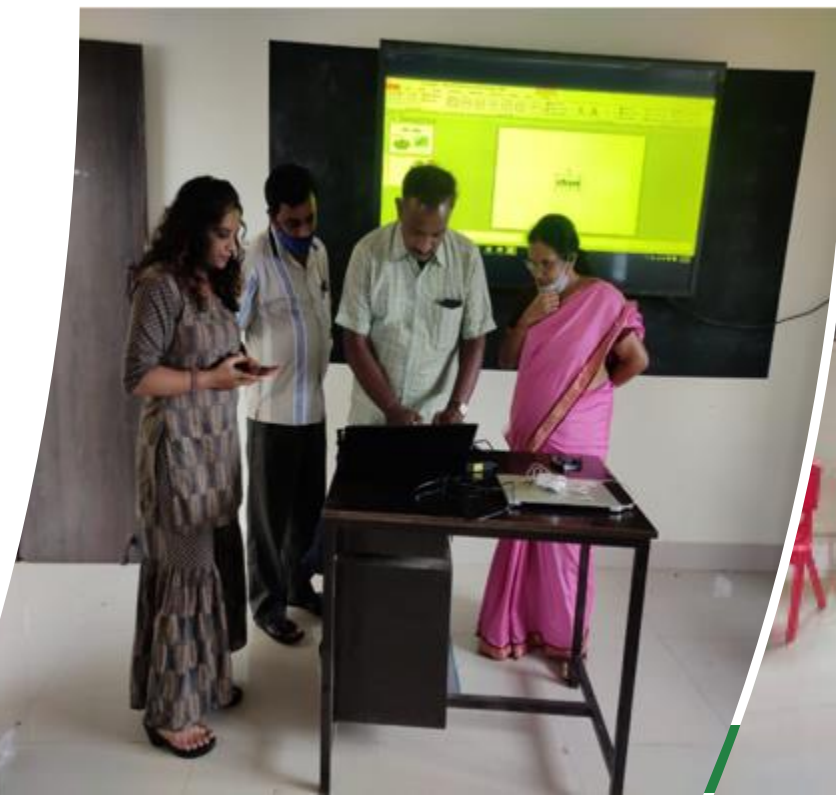
- We are a part of the community in which we learn and do must benefit the society. In addition it is equally important for the members of the community to support education and development of children. With this in mind we created two platforms to encourage interaction of children with the community and vice-versa.





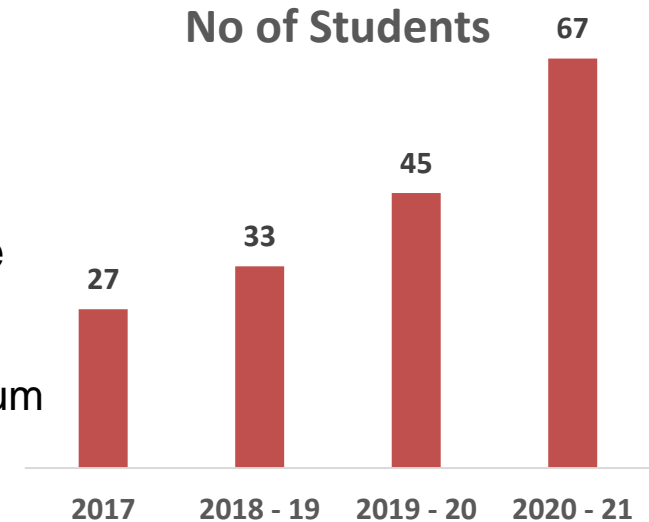
Sustainability

- The real success of a project is determined by the way it is sustained and how it progresses from the point of handover. In order to ensure sustainability of the model school project in schools, we have touched upon four main aspects – stakeholder engagement, training, handover and monitoring.



➤ Outcome

1. Enrollment increased from **27 to 67** students
2. Introduced **Digital teaching**
3. Attendance improved to above **90%** from **61.3%** on an average
4. Academic performance increased **65% to 90%**
5. Children are **competing in district & state level**- Extra curriculum
6. Developed Teachers' capacity to perform multiple roles
7. Increased parents and community participation
8. Registered the Trust
9. Process documentation for Yokoten- **SoP booklet**
10. Benchmarking model- Many visitors from Govt & Pvt



➤ Impact

1. Self sustained model
2. Government school on par with Pvt school – infra, Teaching, extra curriculum etc
3. Children's leadership developed to lead- critical times, events, programs, engagements etc
4. Community ownership- Engagement & Trust

Exit in Mar 2021 and monitor the sustenance

**A child without
education,
is like a bird
without wings.**



*Thank
you!*

