

CORPORATE SOCIAL RESPONSIBILITY POLICY

FINANCIAL YEAR 2022-23

TOYOTA KIRLOSKAR MOTOR PRIVATE LIMITED

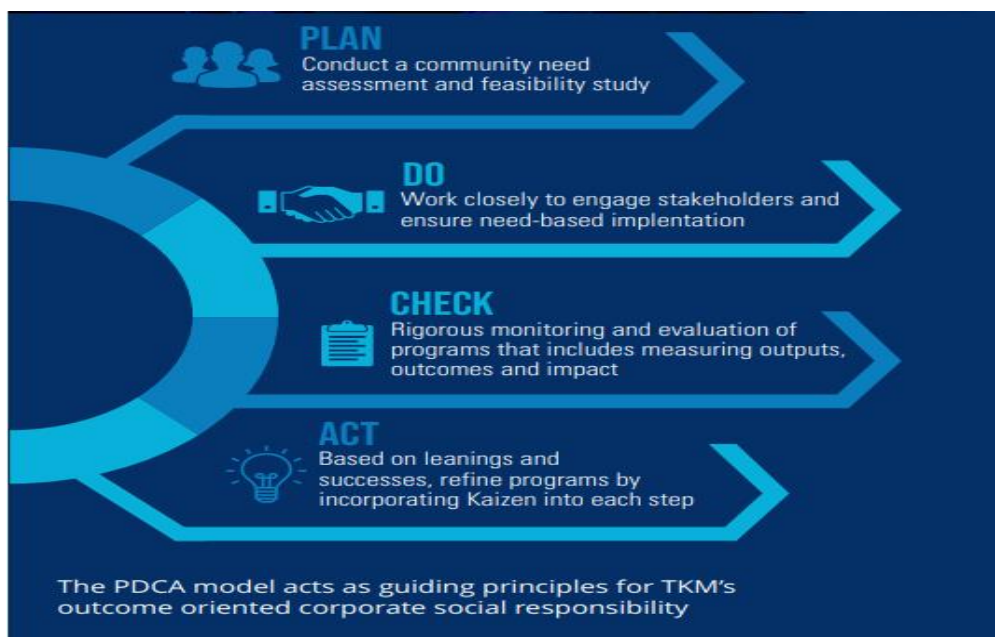
INTRODUCTION

As a responsible corporate citizen, Toyota Kirloskar Motor Private Limited [TKM] is constantly working towards the development of people, communities, and the green earth at large. TKM's Corporate Social Responsibility [CSR] policy is aligned with Toyota's Global Vision 'Seeking harmony between People, Society, Environment, and Sustainable Development of Society through Manufacturing'.

CSR programmes at TKM reflect our pursuit of building **a resilient and sustainable society**. We have been able to pursue our social commitments by deriving inspiration from the needs of the communities and by following a comprehensive assessment exercise as per the **principle of Kaizen** (continuous improvement).

CSR GUIDING PRINCIPLES

TKM derives inspiration from Toyota's leadership in the global automotive landscape and constantly strives towards advancing the legacy. Our endeavours are aimed at contributing to the society by making 'ever-better cars' and are committed to be instrumental in solving the issues of the communities we operate in. TKM Philosophy for sustainable CSR is explained as below.

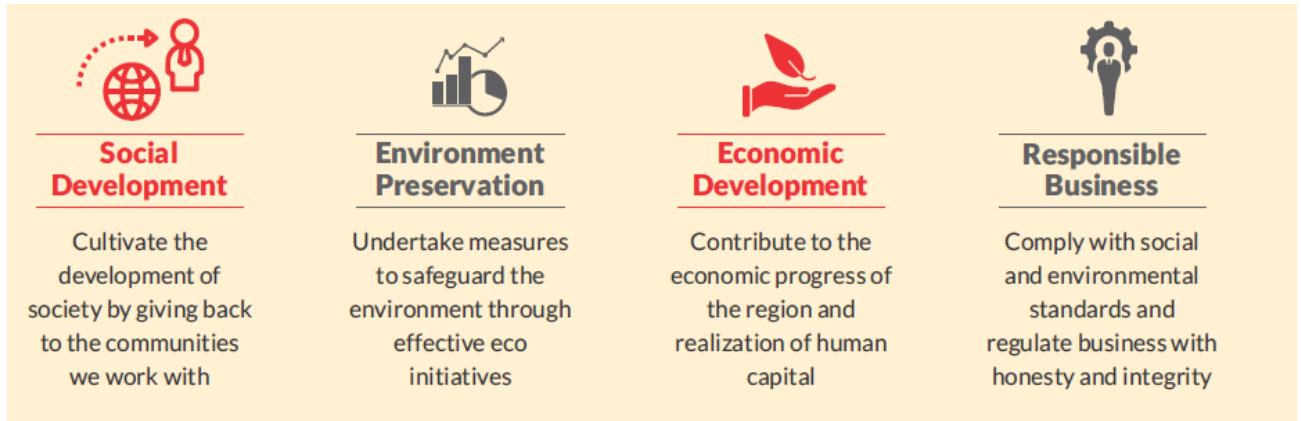


The guiding principles and Toyota's core values are integrated during the planning and execution of the projects.

TKM has taken initiative to contribute to harmonious and sustainable development of society and the earth, based on its Guiding Principles. Corporate Social Responsibility (CSR) has always been at the forefront of TKM's operating philosophy. TKM's CSR activities focus on

bringing about inclusive growth in the society by making interventions to promote education, improve healthcare and support rural development while meeting compliance requirements.

As a responsible corporate citizen, we are a socially committed organization engaged at building vibrant communities in harmony with nature, aiming to become the most admired company in India, meet customer expectations by producing mass happiness to all. Our thematic areas synchronize below mentioned guiding principles.

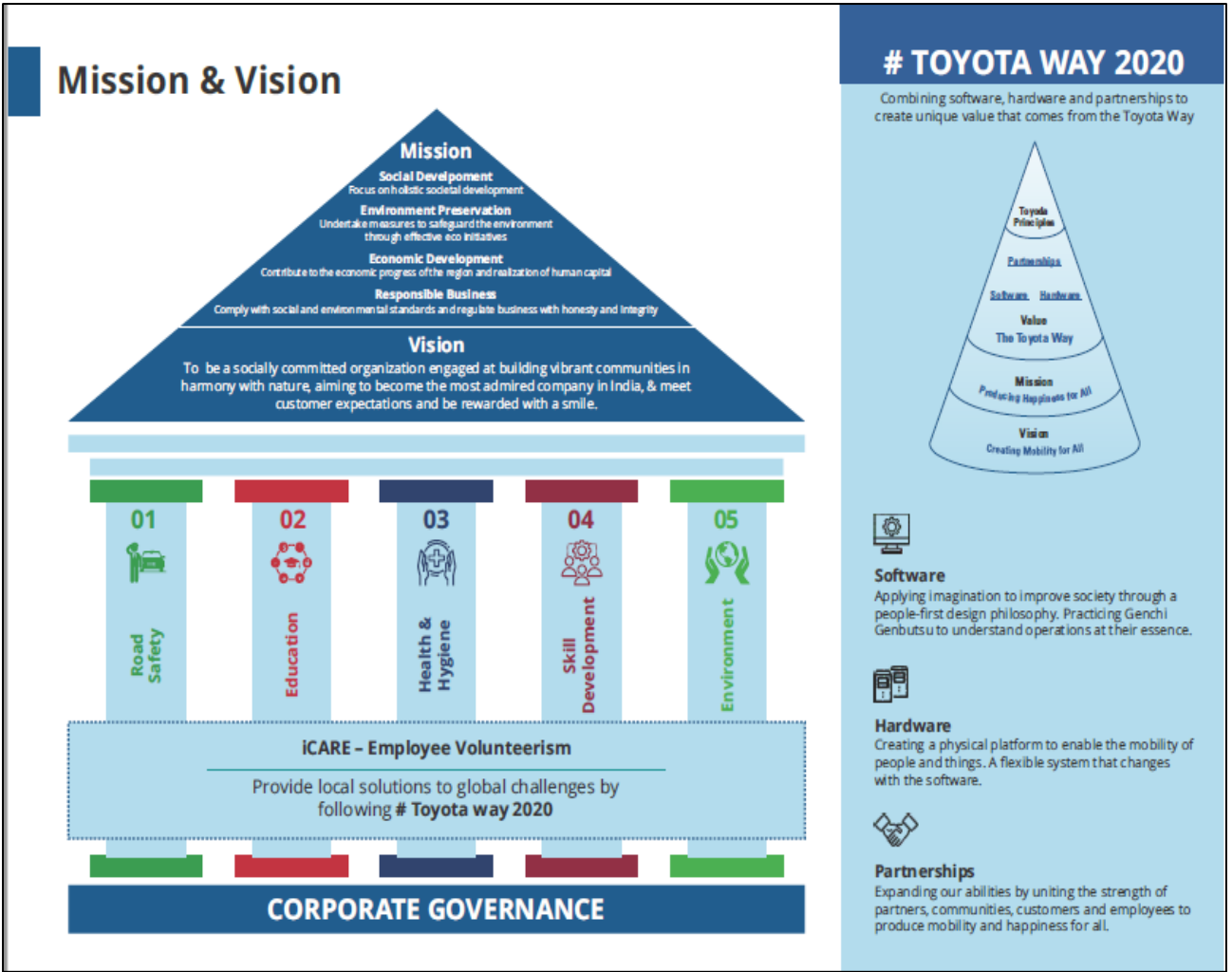


Through sustainable measures, ensuring community participation, Company aims to actively contribute to the social, economic and environmental development of the community and thereby create value for the nation.

IMPLEMENTATION PLAN

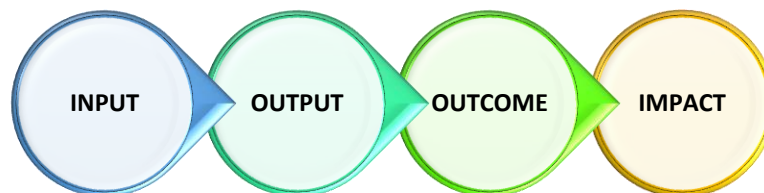
TKM has gradually extended its CSR programme focusing on overall development of the neighboring villages and communities emphasizing on Education, Health & Hygiene, Road Safety, Environment, Skill Development and Disaster Management.

TKM CSR programs focused on Nation's Sustainable Development Goals (SDGs) are unique for their universal coverage, particularly of the most vulnerable. These goals and targets are mapped to encourage action in areas of paramount importance for our society. More significantly, SDGs involve all to shape a more sustainable, prosperous, and safer planet for all humanity. All TKM CSR programs are grouped under 5 major focus areas.



LOGIC FRAMEWORK MODEL

TKM follows Logic Framework model to develop project/programme design including appraisal stages and are subsequently updated throughout implementation across all CSR grammes.



Impact Assessments of the projects will be undertaken to ensure the effectiveness of the projects.

CSR ACTION PLAN 2022-23

Below are the proposed programs and the approved Budget for CSR activities to be implemented in FY 2022-23. The proposed budgets are indicative and may change based on actuals within the overall approved budget. CSR team is authorized to reallocate the budget within the approved programs for seamless intervention. The mandatory spend [2%] for FY 2022-23 is Rs. 63.21 Million.

S. N.	Programme	Schedule VII	Execution schedule	Budget [In Mil Rs.]	Monitor [Milestones]	Impact Assessment	Reporting
1	Toyota Anganwadi Development Program [TADP]	(ii)	April 2022 to Sept 2022	3.60	- SoP by Sept 22 - Hand over by Oct 22	NA	Quarterly Review & Progress Monitor by CSR Committee
2	Toys and Learning Materials supply to 100 Anganwadi center in Haliyala	(ii)	June 2022 to Dec 2022	1.40	- List finalization by June 22 - 50 units hand over by Aug 22 - 50 units by Dec 22	NA	
3	Instruments/ Materials to Specially abled children	(ii)	May 2022 to Dec 2022	0.15	- Items finalization by July 22 - Handover by Oct 22	NA	
4	Enhance the capacity of GKBM school Ramanagara by constructing additional 02 Classrooms	(ii)	June 2022 to Mar 2023	3.00	- Work order by Aug 22 - Hand over by Mar 23	NA	
5	Supply of furniture's a. Govt. PU College Yallapura b. GKBMS Ramanagara c. GHPS & GHS Lakkihalli-Hosadurga Tq	(ii)	April 2022-Mar 2023	1.00	a. Supply by July 22 b. Supply by Mar 22 c. Supply by Oct 22	NA	
6	Construction of 03 Government Schools- Phase I work a. GHPS Chakkere b. GHPS Kodamballi c. Bagalkot or Haveri	(ii)	May 2022 to Mar 2023	35.00	-School Finalization by May 22 - GBC by Sept 22 - Phase I work completion by Mar 23	Yes	

7	Distribution of National Flags to local community to promote awareness about Indian National Flag under “Har Ghar Tiranga” Campaign	(ii)	Aug 2022	0.17	Distribution by Aug 2022	NA	Quarterly Review & Progress Monitor by CSR Committee	
8	Construction of Community Health Centre [CHC] - Phase III- Completion & Handing over	(i)	April 2022 to Mar 2023	25.00	Handover by Mar 23	Yes		
9	Toyota Shale Arogya Program [TSAP]- Medical health checkup for school children to treat Malnutrition, Anemia, Vision and Health Education	(i)	June 22 to Mar 2023	4.50	- School list finalization by June 22 - Complete the activity by Mar 23	NA		
10	Toyota Pure Drinking-water Project [TPDP] - Provide access to pure drinking water in location communities- 05 Units	(i)	May 22 to Mar 2023	5.00	- Location finalization by July 22 - Installation of 5 units by Mar 23	NA		
11	Eco Park - Operation & Maintenance - School children Training	(iv)	April 22 to Mar 2023	3.00	- School list finalization by June 22 - 8900 students training by Mar 23	NA		
12	Skill Development - ITI/ GTTC centers across Karnataka	(ii)	April 2022- Mar 2023	13.00	- MoU with GoK by June 22 - Completion by Mar 23	Yes		Quarterly Review & Progress Monitor by CSR Committee
13	CSR Dashboard - Monitor Activity's as part of Compliance	CSR admin- 5%	April 2022 to Mar 2023	1.00	Real time data upload from May 22 to Mar 23	NA		
14	CSR Publications- Annual report	CSR admin- 5%	April 2022 to July 2022	1.60	CSR Annual report by July 22	NA		
15	TSEP platform Management	CSR admin- 5%	Sept 2022 to Mar 2023	0.35	Annual License renewal by Sept 22	NA		

16	Employees volunteerism activity- iCARE Conduct events in the community	CSR admin- 5%	May 22 to Feb 23	1.00	- Theme finalization by June 22 -Completion by Feb 23	NA	
17	Impact Assessments	Impact Assessment	May 22 to Dec 22	0.30	-School infra report by Nov 22 -Model school report by Dec 22	NA	
TOTAL				99.07			

Further an additional budget of Rs. 37.08 million as a provision to support the above activities is approved by the CSR Committee and Board of Directors as part of its commitment under CSR.

MONITORING & EVALUATION

The CSR Committee recommends the CSR programmes and projects to the Board for its approval. The Board of Directors of the Company through its CSR Committee will plan and monitor the expenditure of CSR activities. The CSR Committee will review the progress of CSR activities on a quarterly basis. The Committee may choose new focus areas and projects with a prior approval of the Board and with proper justification, as and when required.

CSR Policy & projects undertaken will be uploaded on the company website so that it is available in the public domain.

Review mechanism:

- Review meetings with partners and stakeholders on regular basis
- Project site visits and monitor the progress.
- Monthly Progress Report [MPR] with implementing partners.
- Fortnightly review with internal stakeholders
- Monthly review with Division/Functional Head.
- Quarterly review with Government officials [External stakeholders]
- Quarterly review with CSR Committee

APPROVED BY THE CSR COMMITTEE AND BOARD OF DIRECTORS OF THE COMPANY